



PER MONTH

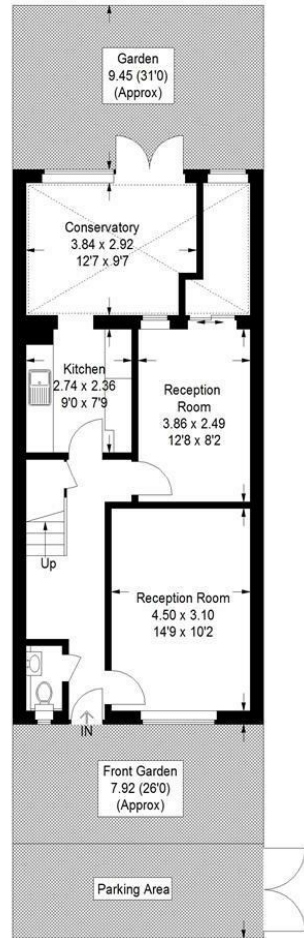
**£3,500 Per Month**

**Shaw Road**  
London, SE22 8DP

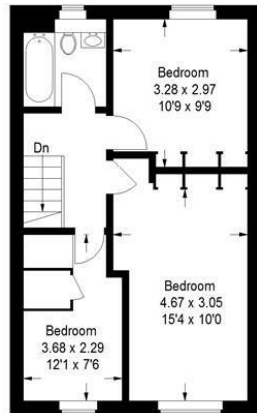
**GARETH**  
**JAMES**

# Shaw Road, SE22

Approximate Gross Internal Area  
101.7 sq m / 1095 sq ft



Ground Floor



First Floor

This plan is for layout guidance only. Not drawn to scale unless stated. Windows and door openings are approximate. Whilst every care is taken in the preparation of this plan, please check all dimensions, shapes and compass bearings before making any decisions reliant upon them. (ID1311056)



### Energy Efficiency Rating

	Current	Potential
Very energy efficient - lower running costs		
(92 plus) <b>A</b>		
(81-91) <b>B</b>		
(69-80) <b>C</b>		
(55-68) <b>D</b>		
(39-54) <b>E</b>		
(21-38) <b>F</b>		
(1-20) <b>G</b>		
Not energy efficient - higher running costs		
<b>England &amp; Wales</b>	EU Directive 2002/91/EC	



Agents Note: Whilst every care has been taken to prepare these particulars, they are for guidance purposes only. All measurements are approximate and are for general guidance purposes only and whilst every care has been taken to ensure their accuracy, they should not be relied upon and potential buyers/tenants are advised to recheck the measurements

# GARETH JAMES

OFFICE ADDRESS  
129 Bellenden Road  
London  
SE15 4QY

OFFICE DETAILS  
02077324330  
lettings@garethjames.com  
<https://www.garethjames.com/>